



# 2024 PACIFIC 6 INTERNATIONAL TAG SERIES

December 6th | 7th | 8th 2024  
Ngati Otara Park | Otara | Auckland

## Managers Information Pack

Version 4.0  
as at 30.11.24



## Welcome

Tenā koutou, Kia orana, Tālofa lava, Mālo e lelei, Fakalofa lahi atu, and warm Pacific greetings, New Zealand Tag Football Inc is proud to introduce the inaugural Pacific 6 International Tag Series, a groundbreaking three-day event designed to create pathways for international tag football experience and opportunities for our New Zealand, Pasifika, and Māori NZTFI players/coaches/managers on an annual basis each year in mid-November reflecting our unwavering commitment to delivering a platform for our adult stakeholders to compete on a competitive international tag arena.

The New Zealand Tag Blacks along with the New Zealand-based Samoa International Tag Federation, Aotearoa Māori Tag Football, Niue Tag Football Inc, Ikaile Tag Tonga, and Cook Islands Tag Football Inc will participate in this event.

Players of New Zealand Pasifika or Māori heritage will be able to properly represent their culture and heritage by having stringent monitoring of players' proof of heritage and ancestry status ensuring compliance with international regulations, fortifying the sport's credibility and nurturing community involvement through increased participation, enhanced health and fitness, mental well-being, and a reconnection with each participant's cultural identity.

### ***“Play Tag, The Game for Every Body”***

***Claude Iusitini***

*National Development Officer*

## Purpose Statement

An **annual** New Zealand-based senior international tag competition providing pathways for our New Zealand tag community to participate at a legitimate international competitive level of tag football to promote enhanced health and fitness, mental well-being and reconnection with cultural identity through the sport of tag football and properly represent their chosen ancestry or heritage at a sanctioned ITF tag event for future Tag World Cups.



## CONTENTS

### Section 1: Conditions of Entry

### Section 2: Event Operations

### Section 3: Tournament Programme

### Section 4: Tournament Format

### Section 5: NZTFI Tournament Rules

### Section 6: Uniform Policy

### Section 7: NZTFI Policies

### Section 8: Protests, Appeals and Disciplinary Matters

### Section 9: Event Registrations

## SECTION 1: CONDITIONS OF ENTRY

1. **Conditions of Entry:** Entries to the event will be accepted provided the following conditions are met by participating members:
  - a. All officials and team members agree to abide by New Zealand Tag Football rules, regulations, policies, and procedures.
  - b. Participants have met all conditions of membership by the New Zealand Tag Football constitution including being a full financial affiliated player.
  - c. All participants are registered online via the official GameDay platform.
  - d. All individuals must be registered to an NZTFI-affiliated module within the current season. They are not serving any judicial or disciplinary penalty under New Zealand Tag Football Judicial and Disciplinary procedures.
  - e. New Zealand Tag Football reserves the right to decline entry to any registered team and/or player.

## 2. Playing Division & Eligibility

### Competitive Playing Divisions

- a. These divisions will have their game scores recorded and ranked within a points table based on their performance throughout the round-robin phase. These divisions will progress into finals phases in which teams will play off to win the PAC 6 Tag Series for their age group. Gold and Silver medals will be awarded to winning teams in these divisions.
- b. The Competitive Playing Divisions are as follows: *This may change if team numbers in EOI forms are updated.*



- U18s Boys / Girls / Mixed
- U21s Mens / Womens / Mixed
- Open Men's / Women's / Mixed
- Senior Men's / Womens / Mixed
- 35s Mens
- 40s Mens
- 45s Mens
- 50s Mens

### Age Grade Policy 2024

Click on this link to see the latest updates regarding under/over age policies for participants:

[Click Here](#)

#### c. Nations Participating at PAC 6 2024

1. New Zealand
2. Samoa (NZ)
3. Tonga (NZ)
4. Niue (NZ)
5. Aotearoa Maori (NZ)
6. Cook Island (NZ)

Emerging Nations such as Fiji, American Samoa, Tokelau, Tahiti, Solomon Islands, and Papua New Guinea will be able to apply in future PAC 6 events if they can demonstrate growth and development in their countries and solid governance and selection processes. This then establishes their **criteria** as recognised ITF emerging nation membership status.

## 4. Squad Sizes

### Senior Events

- **Under 18s, 21s, Open, Senior 30s Grades** Minimum 16 Players Maximum 20 Players registered. Teams can only field 18 players per game. Any extra players must have their playing strip covered up
- **Masters Grades** 16 Players Maximum 22 Players registered. Teams can only field 18 players per game. Any extra players must have their playing strip covered up
- **One team per grade** Each nation can only enter 1 team per grade making six-team divisions and a six-team draw format over 3 days.

*\*Playing team numbers as above will be monitored, Teams that fail to meet the minimum squad size will be notified and withdrawn from the tournament.*

## SECTION 2: EVENT OPERATIONS

### 1) Control of the event

- a. The New Zealand Tag Football National Operations Manager, in conjunction with the New Zealand Tag Football CEO, will oversee all matters relating to the tournament.
- b. Any matters not covered in this information pack will be determined by the officials, and the decision will be final.



2) **Communications**

- a. All communication during the tournament will come via event sound system, email, Gameday Communications and Tournament Control.

3) **Event Contacts and Responsibilities**

<b>Tournament Director: Claude Iusitini</b>
Email: <a href="mailto:claudio@nztagfootball.co.nz">claudio@nztagfootball.co.nz</a>
Location: Roaming
<b>Operations: Lisa Iusitini</b>
Email: <a href="mailto:eventrego@nztagfootball.co.nz">eventrego@nztagfootball.co.nz</a>
Location: Tournament Control
<b>Tournament Analytics: Imogen Pilkington</b>
Email: <a href="mailto:eventrego@nztagfootball.co.nz">eventrego@nztagfootball.co.nz</a>
Location: Tournament Control
<b>Referee Director: Willie Toelau</b>
Email: <a href="mailto:willie@nztagfootball.co.nz">willie@nztagfootball.co.nz</a>
Location: Roaming
<b>Referee Coordinator: Karl Vasau</b>
Email: <a href="mailto:kvasau@nztagfootball.co.nz">kvasau@nztagfootball.co.nz</a>
Location: Referee Base
<b>Field Logistics : Claude Iusitini</b>
Email: <a href="mailto:claudio@nztagfootball.co.nz">claudio@nztagfootball.co.nz</a>
Location: Roaming
<b>Marshall Coordinator: Leanne Gardner</b>
Email: <a href="mailto:gardinerleanne10@gmail.com">gardinerleanne10@gmail.com</a>
Location: Roaming

**Tents/Marquees**

- a. New Zealand Tag Football reserves the right to remove or decline any team from erecting any tent/marquee in a -allocated area.
- b. Pegs cannot exceed 300mm into the ground
- c. Tents may be erected from 1 pm on the Thursday before day 1 of the event.
- d. Security for your region tents will be available for the evenings of the event (Saturday and Sunday only)

**Portaloos/ Toilets & Rubbish Bins**

- a. Portaloos will be stationed across the premises at NZTFI events.
- b. Portaloos and toilet facilities will be replenished and cleaned daily throughout the event.
- c. Rubbish Bins will be supplied around all fields. All participants and attendees should clean up and dispose of their waste in the bins provided.

**Golf Carts**

*Only NZTFI Golf Carts will be authorised at NZTFI events and used for event delivery purposes only.*

- a. NZTFI Golf Carts will be marked with our logo and a number for each Golf Cart.



### Car Parking and Vehicles

- a. Car parking is available on-site at Ngati Otara Park and will operate on a first-in-first-served basis.
- b. Car parking is limited. Carpooling is recommended.
- c. VIP Car parking areas are for Admin/Referees/Officials/Vendors. VIP car park cards must be shown to enter.
- d. Vehicles that block other cars or park in prohibited areas will be warned over the sound system to move. If the car(s) is not moved within 15 minutes, it will be towed at the owner's expense.

### Security

- a. The security of your tent area, and team gear, is your responsibility. New Zealand Tag Football will not be liable for any loss or damage to any equipment and or vehicles. Please ensure your tent is secure and tied down at all times, and that your vehicles are locked at all times when you are at the park.
- b. Overnight security will be provided each night (Friday and Saturday night only) of the event.
- c. Any lost and found property will be held at Tournament Control.

### Medical

- a. New Zealand Tag Football will ensure medical coverage at all events through our Medical Team.
- b. Coaches/Managers are to ensure they provide their first aid kit and supply teams with base medical supplies to treat minor injuries.

### Use of Personal Images

- a. All people accept that by participating in this event, they may be photographed/filmed and that these images may be used by New Zealand Tag Football for promotion of the sport.
- b. New Zealand Tag Football will not pass any image(s) onto a third party unless prior approval is sought.
- c. If you do not wish New Zealand Tag Football to be able to use your image(s) or be filmed, you must notify New Zealand Tag Football in writing to [eventrego@nztagfootball.co.nz](mailto:eventrego@nztagfootball.co.nz) before the event starts.
- d. For more information please refer to the New Zealand Tag Football Use of Image Policy: [Click Here](#)

### Social Media Policy

It's crucial to maintain the reputation of New Zealand Tag Football Inc (NZTFI), its affiliated associations, competitions, and the game itself by using social media responsibly. This includes refraining from posting inappropriate content related to NZTFI or its events. When any NZTFI representative (such as associations, convenors, referees, coaches, or players) discusses tag football on social media, they should conduct themselves in a manner consistent with NZTFI's values and policies. It's important to remember that the internet is not anonymous, and everything posted can be traced back to the individual. Under no circumstances should offensive or negative comments be made online about NZTFI tournament staff, affiliated tag associations, referees, coaches, coaching staff, or players.



## BREACH OF POLICY

NZTFI and Affiliated Associations reserve the right to take appropriate action, as their board sees fit, against any representative who breaches these guidelines including, but not limited to, disciplinary action, fines or taking legal action for damages.

NZTFI will continually monitor online activity concerning the Association and the game.

Any breach of this policy by a representative should be reported to the NZTFI.

If reported and guilty, a breach of this policy may result in disciplinary action, the NZTFI or the affiliated associations can take action as they deem necessary based on the severity of the breach.

For more information please refer to the New Zealand Tag Football Social Media Policy: [Click Here](#)



The Gameday Mobile App (*not associated with Gameday Registrations*) will be available for everyone during the season.

Below are instructions to navigate the Gameday Mobile App;

1. Firstly download the GameDay App onto your device.
2. You will then need to register an account and follow the prompts for this
3. Once registered & logged in select the “t-shirt” icon in the bottom right corner.
4. Select ‘comp’ or ‘team’ and enter “NZTFI Tournament”. Please tap on that option once it pops up.
5. Once you have clicked “NZTFI Tournaments” you should now have the option to view competitions & teams.
6. At this point you can navigate the app freely to find the team you are supporting by selecting a comp, then the team and you can view the fixtures/results etc.

For more information on the app and how to access it, please follow this link: [Click Here](#)



### Livestream & Finals Field

- a. Competitive Grade Grand Finals will be live-streamed on the New Zealand Tag Football Inc. Facebook page and YouTube Channel via Stream Shop.
- b. Players cannot wear inappropriate headwear/branded caps/beanies/sunglasses in any live-streaming games
- c. Any form of violence or abuse during a live-streaming game will not be tolerated. Broadcasting will be cut and the game will be abandoned.
- d. Teams participating in any LIVE streamed games must strictly follow the NZTFI codes of conduct. [Click Here](#)
- e. Any breach or bringing the game into disrepute will result in the termination of the broadcast and both teams eliminated from the tournament and suspended from all tag for a minimum of two years.



- f. Any team that plays an unregistered player during a live-streamed grand final game will be disqualified and suspended from all tag at all levels effective immediately from the time of the infringement for a minimum of two years. There will be no right of appeal or judicial hearing for the infringement due to clear-cut evidence of a breach live-streamed.
- g. If a team plays in a live-streamed grand final, a list of accurate player shirt numbers and full (preferred) names must be updated on the online registration form.

### Event Activations



#### **Team Photography: Farrelly Photos**

A formal team photo service will be available on-site through **Mike Farrelly Photography**.  
Contact: Mike Farrelly Mob: 027 274 6868 Email: [mike@farrelly.co.nz](mailto:mike@farrelly.co.nz)



#### **Event Action Photography: Alphapix Photography**

The team will be shooting action shots of the games throughout the weekend. Action shots will be uploaded to the New Zealand Tag Football Inc. Facebook page in the week following the event.

- i. Please note that the action photographers do their best to capture as many photos as possible throughout the weekend. We cannot guarantee they will capture action shots of every team/game.
- ii. Please see our NZTFI use of image policy on our website: [Link](#)



#### **Videographers: Sono Productions**

There will be professional videographers documenting the event and producing videos that will be posted to the New Zealand Tag Football Inc. Facebook page. Their friendly crew may ask if you would like to be on video or interviewed throughout the weekend!







## **Be a Good Sports Ambassador -**

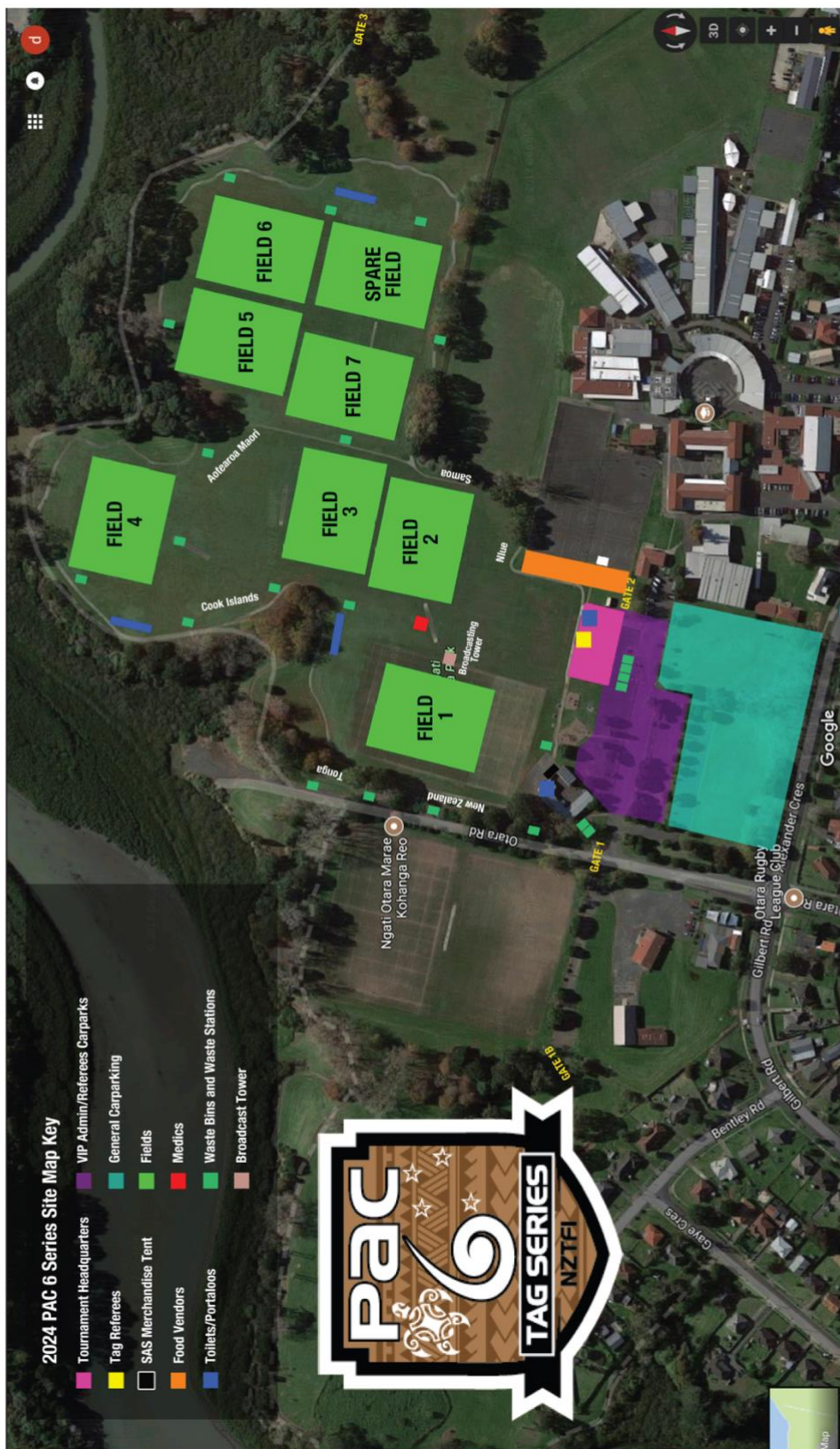
### ***Sideline Behaviour***

This has been a major problem for our referees for many years. This initiative is designed so that the onus and responsibility is on the participating teams to control the behaviour on the sidelines and make it a safe environment for our tag community and more importantly our referees who have been subjected to verbal abuse and intimidation. Mental health is also a major factor as to why these measures are being put in place and will assist with the referee's control of the games at this event.

- a. Each team must nominate a parent/supporter to wear the 'Be a Good Sport' Hi-Vis vest.
- b. The Ambassador cannot be the Coach/Manager/Trainer/ Coaching Staff
- c. At the conclusion of the game, the Ambassador is to return the vest to the referee.
- d. They are responsible for ALL sideline behaviour and must remind those who breach the codes of contact and what the consequences may be if it continues.
- e. The Be a Good Sports Ambassador will liaise and assist with the referee, marshals or any sideline or admin official during the running of the game
- f. The Ambassador will report to the referee any sideline abuse or violent behaviour and will assist the referee in identifying the person/s who are in breach and assist in their removal from the game as per the terms in 6.4
- g. Be kind and supportive at all times at the event and follow the NZTFI Codes of Conduct.



### Event Site Map



## SECTION 3: TOURNAMENT PROGRAMME

### **Senior Event**

This tournament will offer playing divisions from Under 18s through to 50s in the Men's, Women's and Mixed Divisions. All teams will be playing for medal placings for the Pac 6 Tag Series Champion titles

- For all age groups, our target is to schedule 7 games, depending upon the number of teams participating in each grade.

## SECTION 4: TOURNAMENT FORMAT

### 1. Draw Information

### 2. Opening Ceremony

- **IT IS COMPULSORY TO ATTEND THE OPENING CEREMONY**
- **ALL 6 nations/contingent teams will be required for the Opening Ceremony and must arrive at 7:45am for an 8:15am START**
- **The Itinary will be posted to our Website as soon as it is finalised.**
- **The Opening Ceremony will conclude approximately 8:45am so that the teams playing in the 10am round have time to prepare**
- **A Blessing of the event and Taonga as well a tribute to Nonu Su'a and Kathleen Wharton as well as the Flag raising for each nation will be presented.**

**\*\*OPENING CEREMONY ITINERARY WILL BE POSTED SHORTLY**

### **GRAND Finals & Presentations**

10 x Age Grade Grand finals will take place on the Sunday December 8<sup>th</sup> on Field One only at this year's event\*\*

- i. Age / Grade / Final e.g 40s Mens Final
- ii. Continuation
  - b. Live streamed Grand Finals will be broadcast on our NZTFI YouTube Channel on Field 1 from 10am onwards
  - c. Medal presentations will take place following each Grand Final in front of the clubrooms Presentation area.
  - d. Teams are required to immediately make their way to the medal presentation to receive their medals and official team photo.
  - e. Gold medals will be presented to teams that win a final.
  - f. Silver medals will be presented to teams that place runner-up in the final.
  - g. Bronze Medals will be awarded to those teams who Win/come third.
  - h. Upon receiving their medals they will then have an official photo in front of the Tournament Champions Banner with the PAC 6 Taonga.
  - i. Gang hand signal signs will not be accepted in the photographs
  - j. No Bandanas, Branded NBA/NFL/Streetwear brands, Beanies will be acceptable in the team photos.
  - k. Medalled team photos will be posted to our official Social Media Platform



3. We aim to Scheduled a minimum of 6 Games for teams competing at PAC 6 Series ( 5 x Robins, Semi Finals, Finals)

### Competition Grades Explanation Formats

#### U18s Boys/U21s Mens/Open Mens

- 5 Teams (3 Grades combined)
- 2 x 18s Boys, 2 x Open Mens, 1 x U21s Mens
- 6 x Round Robin Games
- Each team gets a BYE round worth 2pts
- Bye round is worth 8pts added to the "For" column in the points table
- **Day 3 Finals Day format**
- U21s Mens is eligible for the Open Mens Medal placings
- U21s Mens will be rewarded with U21s Mens Gold Medals
- Highest Finishing Open Mens team moves to Grand Final
- 2<sup>nd</sup> Place Open Mens v U21s Mens determines who goes to Grand Final
- U18s Boys Grand Final will be Livestreamed on Field 1 2:10pm
- Open Mens Grand Final will be Livestreamed on Field 1 4:40pm
- Teams will make their way to the medal presentation area to collect their medals and team photos with the PAC 6 Taonga.

#### U18s Girls/U21s Womens/Open Womens/Senior Womens

- 6 Teams (3 Grades combined)
- 3 x 18s Girls, 1 x Open Womens, 1 x U21s Womens, 1 x Senior Womens
- 6 x Round Robin 40min Games
- **Day 3 Finals Day format**
- The top two U18s Girls teams after round robins will advance to the 18s Girls Grand Final for Gold/Silver
- U18s Girls 3<sup>rd</sup> placed team automatically wins the U18s Bronze Medal
- Lowest finishing U21s Womens/Senior Womens team will play the U18s Girls Bronze In a Final Placing game
- Highest Finishing U21s Womens/Senior Womens team will play the Open Womens team in the Grand Final
- U21s Women, Senior Womens are awarded Gold Medals for their respective grades No matter where they finish
- U18s Girls Grand Final will be Livestreamed on Field 1 1:20pm
- Open Womens Grand Final will be Livestreamed on Field 1 3:50pm
- Teams will make their way to the medal presentation area to collect their medals and team photos with the PAC 6 Taonga.

#### U18s Mixed/ U21s Mixed

- 5 Teams (2 Grades combined)
- 3 x U21s Mixed, 2 x 18s Mixed
- 7 x Round Robin Games
- Each team gets a BYE round worth 2pts
- Bye round is worth 8pts added to the "For" column in the points table
- **Day 3 Finals Day format**
- Highest Finishing U21s/18s Mixed team automatically goes to Grand Final
- **Minor Semi 1** U21mx 2<sup>nd</sup> Place v 3<sup>rd</sup> Place
- **U18Mx Grand Final will be Livestreamed on Field 1 10am**





- **Major Semi 2** U18Mx GF Winner v Wnr Mnr Semi 1
- Final Placing Game Lsr 18Mx GF v Lsr Mnr Semi 1
- Bronze Medal to 3<sup>rd</sup> Placed U21Mx Grade
- U18s Mixed Teams are eligible to place in U21s Mixed finals due to playing up a division
- U21s/18s Mixed Grand Final will be Livestreamed on Field 1 3:00pm
- Teams will make their way to the medal presentation area to collect their medals and team photos with the PAC 6 Taonga.

### Opens Mixed/ Senior Mixed

- 5 Teams (2 Grades combined)
- 3 x Open Mixed, 1 x Senior Mixed
- 6 x Round Robin Games
- Each team gets a BYE round worth 2pts
- Bye round is worth 8pts added to the "For" column in the points table
- **Day 3 Finals Day format**
- Senior Mixed team is guaranteed Gold Medal for Senior Mixed Grade
- Senior Mixed is eligible for the Open Mixed Finals (Not Medals)
- Highest Finishing Mixed team automatically goes to Grand Final
- Remaining 4 teams play off in Minor Semis 1&2 to determine who goes to Major Semi 2&3
- Loser of Major Semi 2 & 3 goes to Bronze Final Field 2 @ 3:50pm
- Winner of Major Semi 2 goes to Grand Final
- Open Mixed Grand Final will be Livestreamed on Field 1 @ 5:30pm
- Teams will make their way to the medal presentation area to collect their medals and team photos with the PAC 6 Taonga.

### 30s Senior Mens

- 4 Teams
- 6 x Round Robin Games
- 3 games per day
- All teams play each team twice over the first two days
- **Day 3 Finals Day format**
- 1<sup>st</sup> and 2<sup>nd</sup> Place teams play in Gold/Silver Grand Final on Field 1 @ 12:30pm
- 3<sup>rd</sup> and 4<sup>th</sup> Place teams play in the Bronze Medal Final on Field 2 @ 10:50am
- Teams will make their way to the medal presentation area to collect their medals and team photos with the PAC 6 Taonga.

### 35 Mens/ 40 Mens

- 4 Teams
- 6 x Round Robin Games
- 3 games per day
- All teams play each team twice over the first two days
- **Day 3 Finals Day format**
- 40s Mens Gold/Silver Grand Final on Field 1 @ 10:50am
- 35s Mens Gold/Silver Grand Final on Field 1 @ 11:40am
- Teams will make their way to the medal presentation area to collect their medals and team photos with the PAC 6 Taonga.

### 50s Mens/45 Mens

- 4 Teams
- 6 x Round Robin Games



- 3 games per day
- All teams play each team twice over the first two days
- **Day 3 Finals Day format**
- 50s Mens 1<sup>st</sup> Place v 2<sup>nd</sup> Place for Gold/Silver Grand Final Field 2 @10:00am
- 3<sup>rd</sup> Place 50s Men Bronze Medal v 45s Mens Gold on Field 3 @10:00am
- Teams will make their way to the medal presentation area to collect their medals and team photos with the PAC 6 Taonga.

## SECTION 5: NZTFI TOURNAMENT RULES

### 1. Rules, Policies & Procedures

- International Tags Rule Book: [Click Here](#)
- NZTFI Rule Book: [Click Here](#)

### 2. Playing Time

- a. Time will be managed centrally through a hooter system. Extra time will only apply where a result is required.

### 3. Team Entries

- a. Each region/contingent may enter only 1 team in each grade.

### 4. Deciding Teams/ Equal Points

- a. In the qualifying rounds, a draw will count.
- b. After round robins conclude, teams' advancement to the finals rounds is determined in the following order:
  - I. Points
  - II. For and Against
  - III. Percentage
- c. The team with the highest points at the end of round robins will proceed as top seed into the finals rounds.
- d. If two(2) or more teams have finished the round robins on the same/equal points, the team with the least number of tries scored against them will place ahead.
- e. If still undecided, the team with the higher percentage will be placed ahead.

### 5. Amendment of Tournament Rules

*To ensure the smooth running and organisation of the event, the CEO and Tournament Director has the right to change, amend, and adjust the tournament rules as required. This includes draw formats.*

### 6. Team Numbering

- a. Team numbering must be 1-20/22 inclusive. Players **must** retain the **same** playing number, which must match that of the online team sheet via GameDay, throughout the tournament.

### 7. Defaults / Ballot Matches

- a. All games in all grades or divisions must be played in full throughout the Tournament. Any team failing to do so will result in an automatic deduction of 2 points and an 8-point loss in their "for and against" standings.
- b. If a team is not on the field when the hooter sounds, the referee will add 1 point a minute up to 5 minutes. When the 5 minutes is up & still no team has arrived then the referee will call the game off.



- c. The referee must get the manager of the team that was present to sign the card to claim the win by default.
- d. **Teams are required to appear for all scheduled Ballot Matches without exception. Failure to comply will result in an automatic deduction of 2 points and an 8-point loss in their "for and against" standings.**
- e. Teams choosing to default will not be eligible for this grade next season. ie If Cook Islands Open Mens chose to default a game at this event, Cook Islands Open Mens would not be eligible to compete next season.

## 8. Team Officials

*Team officials may issue verbal instructions to on-field players from the interchange area, however, if they leave the interchange area, they can only observe the game and remain mute.*

## 9. Player Safety Rule

- a. The Referee is empowered to enforce measures ensuring the safety of participants during a match. However, the determination of whether the playing field meets health and safety standards rests outside their authority. Should referees identify safety concerns, they are obligated to report them to NZTFI Tournament control personnel. The final decision regarding the field's suitability for play rests with the CEO or their designate.

## 10. Spectators

- a. All persons not involved in the game must stay clear of the field of play and in cases where the field is closed off, must stay behind the barrier/ropes.

## 11. Sunglasses

- a. Wearing sunglasses during a game is forbidden.
- b. Before any player who requires Prescription glasses can take to the field, they must complete a dispensation form.
- c. **The dispensation must be confirmed 5 days before the Tournament.**
- d. Email: [admin@nztagfootball.co.nz](mailto:admin@nztagfootball.co.nz) for your dispensation request.

## 12. Match Ball & Match Tags

- a. The Match ball and Match tags will be provided by New Zealand Tag Football.

## 13. Competition Points

The following competition points will apply:

Win 2 points  
 Draw 1 points  
 Loss 0 point  
 Forfeit 0 points (Loss of entry next season) s

## 14. Playing and Surrounding Environment

- a. At their sole discretion, the Match Referees, Referee Support Official, NZTFI Referee Coaches or NZTFI Tournament Officials have the right in exceptional circumstances to instruct any person(s) to immediately leave the park and/or surrounding playing area should the conduct of the individual(s) considered to be



threatening, abusive or bring the game into disrepute. This provision also applies to the conduct of team officials. If a person and/or team official refuses to comply with the instructions of the Match Referees, Referee Support Official, NZTFI Referee Coaches or NZTFI Tournament Officials then the match will be stopped until the instruction is complied with.

### 15. Referee Abuse – Members of the public, team officials and players

*Abuse of referees, umpires and match officials is a global problem and New Zealand is not immune from such problems. Referees, umpires, and match officials encounter an array of hostile behaviours from players, coaches and spectators ranging from verbal abuse to physical assault*

For further information please click the Link: [Click Here](#)

### 16. Score Cards

- a. Appointed referees will be responsible for keeping the match score.
- b. Sin bins and Send-offs will be recorded on scorecards.
- c. Each Team Manager is responsible for scoring. Team managers must stand side by side for the duration of the game
- d. At half-time, team managers are encouraged to check the score with referees.
  - i. At the completion of the game, if the team(s) agree with the score written on the scorecard, the card is to be signed by the Team Manager.
  - ii. The team that did not sign the card has the right to lodge a protest.
- e. Refer to section 8 of this information pack for the process of submitting a protest.
- f. Protest once the commencement of any finals will not be considered.

## SECTION 6: UNIFORM POLICY

### 1. General Overview

The NZTFI uniform policy outlines the playing strip (uniform) criteria at all NZTFI tournaments.

### 2. Compulsory SAS Uniform Requirements

All teams and delegations must wear matching SAS tag uniforms for this tournament. This ensures fairness by keeping everyone's attire consistent, preventing any advantages or disadvantages due to differences in fabric elasticity or quality.

In each region or delegation, all teams must wear the same colours for their playing strips. NZTFI will check this during the event and deduct points from teams failing to adhere to this new rule.

It is important to note that NZTFI/SAS reserves the right to reject uniform colours of teams or regions that coincide with those worn by NZTFI Referee Uniforms and/or NZTFI Officials, this includes colours Bright Green, Bright Yellow, and Bright Pink.

A new uniform is to be purchased each season for all events. Only teams sporting the current season's uniform will meet the event's entry conditions.







Uniform requirements:

- 2024-2025 season and moving forward all teams will be required to have numbers from 1-20 only for 18s - Senior Grades and 1 – 22 for masters grades.
- 1 x SAS Numbered Playing Top (Numbers must be clear and visible from a distance)
- 1 x SAS Playing Tag Short/ Tights (NZTFI recognize tag shorts as equipment)
- Uniform Numbers must match the player in the registration forms
- Strictly no double numbers.
- Teams with incorrect uniform due to late order placement will be deducted 2 points at the end of the round robins.
- Off-field gear can be SAS or other brands.

### 3. On-Field Gear Rules

Players must comply with the following dress rules when playing on the tag field:

- **NO bandanas, beanies or branded NFL, NBA, NRL, AFL etc. merchandised caps are to be worn during any game in particular Live Streamed games.**
- Standard non-branded baseball-type caps or soft sun visors can be worn.
- Branded region caps, bucket hats, and sun visors can be worn during games.

### 4. Ordering Uniforms

Ordering and payment instructions for tag uniforms will be advised by:

Email: [peter.martin@sas.co.nz](mailto:peter.martin@sas.co.nz)

Mobile: 021 023 17656

Please contact Peter for further information.

### SAS Uniform Order Timeline

The graphic features the SAS logo in the top left, the NZTFI logo in the top right, and the Pacific 6 Series logo in the center. Below the logo, the text reads "PACIFIC 6 SERIES" and "15TH & 17TH NOVEMBER 2024". A timeline bar at the bottom contains five stages: "01 JUL 2024 Finalize the design.", "22 JUL 2024 Sign off the concept.", "29 JUL - 5 AUG 2024 Request the proof document.", "12 AUG 2024 Requesting AW and 3Ds.", and "26 AUG 2024 Request the Contact details from the managers." Below the timeline, it states "09TH SEP 2024 WEBSITE OPENING | 17TH SEP 2024 WEBSITE CLOSING". At the bottom, there are flags for New Zealand, Switzerland, Taiwan, Australia, United Kingdom, and the European Union. A smaller version of the Pacific 6 Series logo is in the bottom right corner.

## SECTION 7: NZTFI POLICIES

The following New Zealand Tag Football policies apply for all events:

Policies are available on the website: [Click Here](#)

## SECTION 8: PROTESTS, APPEALS, AND DISCIPLINARY MATTER

### No Judicial Hearing during event

NZTFI reminds participants that there will no longer be a judicial process for any fighting or breaches of the codes of conduct at the 3-day event.

The judicial hearing if necessary will take place **post the event** on a date to be confirmed by the judicial team.

**The following statement will not be open to discussion** and therefore, formally advises all coordinators, players/coaches/managers and supporters that they must be aware of this before the tournament.

- a. The Referee – The Referee’s calls are final and will not be questioned by the Tournament Officials. The referee may impose any sanction necessary to control the match and will impose penalties for infringements of the rules.
  - Claims of bias will not be accepted.
  - Any form of verbal or physical abuse of a referee will NOT be tolerated. This may result in points being deducted and/or players/ teams removed from the event.
- b. Any team found to have fielded a disciplined, sent-off, or non-registered player will face immediate disqualification with no refund. Additionally, all coaches, coaching staff, managers, and players involved could be suspended from participating in tag for a period of up to 2 years from the date of the infringement.
  - The coach/manager found in violation will need to compose a public apology letter addressed to the NZTFI and the affected team(s), recognizing that their actions have tarnished the reputation of the game.
  - The need for a Judicial process after the event will be waived in cases of evident deceit or deception. The event organizers and tournament directors will have the ultimate authority to determine the repercussions of the infringing team's actions, and their decision will be final.
  - Upon completion of their suspension period, the coach/manager/players must submit a written request for reinstatement to participate in the game of tag at all levels.

### Protests

- a. If a team disputes the score recorded on the scorecard, they should refrain from signing it and instead file a protest within the 30-minute timeframe.



- b. Any protest is to be lodged by the registered team manager and/or coach only. This includes eligibility protest.
- c. A \$200 fee must be submitted with the protest, which will be refunded if the protest is upheld.
- d. The following information is to be provided with the protest to the Operations Manager within 30 minutes of the game concluding:
  - i. Video of Game in full. Showing all tries scored.
  - ii. The order the scoring occurred (including player numbers of both teams)
  - iii. The half-time and the full-time score
- **Protests will not be lodged without the above information and are not considered once any finals have commenced.**
- e. The opposing team will be summoned to confirm the score. If they disagree or if the evidence is inconclusive, the score recorded by the referees will stand.
- f. No Protests will be accepted after the Quarter Final Teams have been selected.
- g. Should a team intend to protest a player's age, a \$200 fee must be submitted to the operations manager within 30 minutes of the game's conclusion accompanied with evidence before the protest is reviewed. If the protest is successful, the fee will be refunded.
- h. Protests will not be upheld for referee decisions.
- i. **Unregistered Players/ Heritage InEligibility**

Any team discovered with unregistered players/ Heritage InEligibility during gameplay may face immediate disqualification from the competition.

- Random sideline inspections may take place throughout the tournament.
- Teams wanting to dispute a player's heritage ineligibility should follow the protest process outlined in section 8.
- Coaches/managers may submit photo or video evidence to identify any unregistered players on opposing/competition teams.

## SECTION 9: Event Registrations

*To Affiliate please register/ play at your local module.*

*For players who do not have a module in your local area please register at NZTFI GROWTH MODULE.*

*National Affiliation Fee if purchased more than once in a season is Non - Refundable Do not finalise/complete payment if you have purchased the National Affiliation Fee, please contact*

**To check module venues :[click here](#) (Updates are made regularly to the website)**

### 1. **Event Tournament Fee**

#### **Senior Event**

- *NZ Heritage Nations/Contingents = \$125 NZD per player*

### 2. **PAC 6 Tag Series Player Eligibility**

- **NZTFI Affiliated Module Player**

All players must be registered and participating in an NZTFI-affiliated module. Team managers are responsible for ensuring that all players on their team meet this requirement prior to registering for this event. Failure to comply will result in penalties.



- **Heritage and Ancestry Proof:**

Players must establish eligibility based on:

- a. Their birth country
- b. Birth countries of their parents or grandparents.

*Selection and acknowledgement by the national body based on proof of heritage. This ensures that players have a genuine connection to the country they represent.*

3. **Documentation and Vetting:**

- a. All players must meet eligibility criteria and undergo vetting and approval by the national body they represent.
- b. All players are required to submit their ID and proof of heritage during online Game Day registrations. Coaches/Managers must have all players' documents physically present throughout the entire event.
- c. Nations participating in sanctioned events must supply documentation of heritage or ancestry. Proof of eligibility must be available and failure to provide legitimate evidence may result in penalties like loss of points, disqualification, or default from the tournament.

4. **Dispensation for Non-Heritage Players:**

- i. Customary and cultural rights may allow non-heritage players to represent a country, provided they have official dispensation from a sanctioned government document or sports body. You can not select a non heritage player over a heritage player. This ensures transparency and legitimacy in player selection.

5. **Judicial Process for Eligibility Protests:**

- i. Eligibility protests can be lodged during round-robin play with a fee of \$200 (NZD), which is refunded if the protest is successful.
- ii. Protests cannot be lodged from quarter-finals onwards, ensuring minimal disruption to the tournament's later stages.

6. **Age Eligibility and Consistency:**

- a. Age eligibility must align with NZTFI senior events to maintain fairness across competitions.
- b. Link: [Click Here](#)

- ~~7. **How do I enter my team?**~~

~~All team entries will be completed online through Game Day registration links.~~

- ~~● Managers must first register their team to obtain a team code.~~

~~(Please email [eventrego@nztagfootball.co.nz](mailto:eventrego@nztagfootball.co.nz) if you have entered your team twice in error)~~

- ~~● Once the team is registered, players can then register themselves into the team using their **team code**.~~
- ~~● The Registration cut-off dates will be strictly monitored, please plan accordingly. Registration closes well before the event, giving us time to verify each player's age and ensure teams have the minimum required number of players before the event begins.~~
- ~~● Check <https://nztagfootball.com/wp-content/uploads/2024/01/Registration-FAQ.pdf>~~

8. **Timeline ( Change per event)**



Event EOI (Expressions of Interest) Forms: **Completed**  
 Event Team & Player Registration/Payment Links OPEN: **14<sup>th</sup> October 2024**  
 Event Team & Player Registration/Payment Links CLOSED: **15<sup>th</sup> November 2024**

Event Tournament Draw: **29.11.24**  
 Referee Field Allocation Released: **6.12.24**  
 Draw Runsheet Released: **29.11.24**  
 GameDay Draw Released: **29.11.24**  
 Event Site Map released: **29.11.24**  
 Managers Information Pack FINAL Release: **4.12.24**  
**Opening Ceremony Itinerary: Tuesday December 3rd 2024**  
 Event Tournament Day 1: 6th December 2024  
 Event Tournament Day 2: 7th Decemeber 2024  
 Event Tournament Day 3: 8th December 2024

#### 9. Refunds

**National Affiliation Fee (NAF)** *National Affiliation Fee if purchased more than once in a season is Non – Refundable. Do not finalise/complete payment if you have purchased the National Affiliation Fee, please contact [eventregos@nztagfootball.co.nz](mailto:eventregos@nztagfootball.co.nz).*

#### Eligibility Criteria

- Teams must still meet the minimum player numbers without the intended refund player, to be accepted.
- Player Gameday receipt
- A Bank account name and number

If you qualify, click the link to complete the form: <https://wkf.ms/3VP9Mbv>

**Refund forms submissions must be in be submitted by Wednesday 4th Decemeber 2024, 12pm (Midday)**

**Note: No refunds will be accepted after this date.**

**All accepted refunds are processed post event,**

**Accepted refunds will be minus the Gameday payment service fees.**

#### 10. GameDay Team REGISTRATION LINKS:

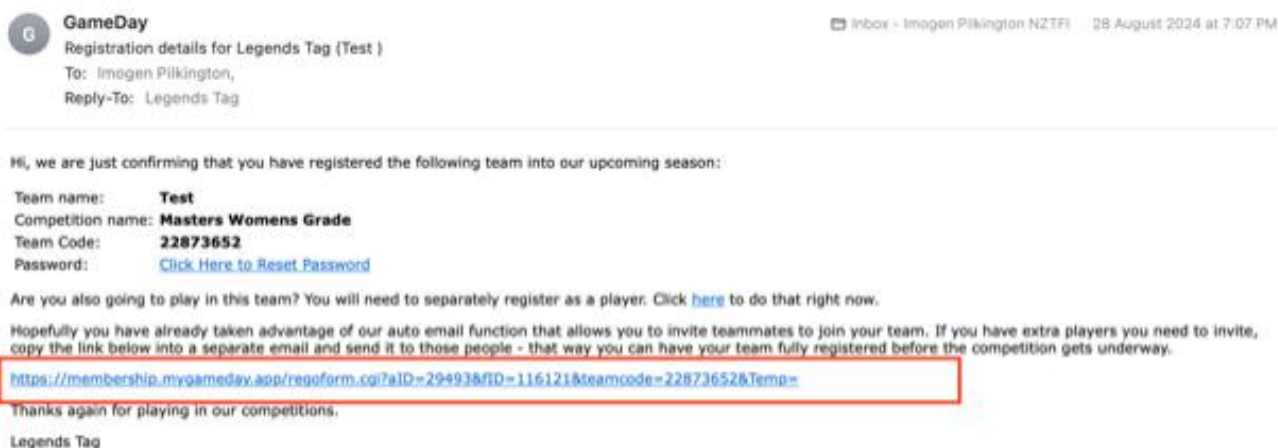
**National Affiliation Fee (NAF)** *National Affiliation Fee if purchased more than once in a season is Non – Refundable. Do not finalise/complete payment if you have purchased the National Affiliation Fee, please contact [nztfi\\_modules@nztagfootball.co.nz](mailto:nztfi_modules@nztagfootball.co.nz)*



Team Managers/Coaches for all grades, except **Senior Mixed**, please read the information below.

It is your responsibility to register your team. Once you complete the team registrations, you will receive a Gameday confirmation email containing a unique player registration link for your team to share with team players.

**Below is an example of a confirmation email and information on where to find the unique link.**



© Copyright GameDay. All rights reserved.

This email is subject to GameDay Privacy Policy: <https://mygameday.app/privacy-policy/>

**U18s Teams:** <https://membership.mygameday.app/regofrm.cgi?formID=116584>

**U21s Teams:** <https://membership.mygameday.app/regofrm.cgi?formID=116585>

**Opens Teams:** <https://membership.mygameday.app/regofrm.cgi?formID=116586>

**35s Mens Teams:** <https://membership.mygameday.app/regofrm.cgi?formID=116635>

**40s Mens Teams:** <https://membership.mygameday.app/regofrm.cgi?formID=116614>

**45s Mens Teams:** <https://membership.mygameday.app/regofrm.cgi?formID=116615>

**50s Mens Teams:** <https://membership.mygameday.app/regofrm.cgi?formID=116616>

**30s Seniors Mens & 27s Womens**

**Teams:** <https://membership.mygameday.app/regofrm.cgi?formID=116613>





**Senior Mixed Team Managers/Coaches**, it is your responsibility to register your team. Once you complete the team registration, you will receive a confirmation email, but there will be no unique link to share with players. **Please use the specific player registration links below— one for females and one for males.**

**Senior Mixed**

**Teams:** <https://membership.mygameday.app/regofrm.cgi?formID=116630>

**Senior Mixed MENS**

**Players:** <https://membership.mygameday.app/regofrm.cgi?formID=116632>

**Senior Mixed WOMENS**

**Players:** <https://membership.mygameday.app/regofrm.cgi?formID=116633>

**11. Registration Cut-Off Date**

NZTFI registration admin will closely monitor registrations, payments, squad sizes, and age eligibility. All registrations and payments must be punctual; late ones won't be accepted, and no extensions will be granted. *Refer to the timeline for closing dates.*

